

HIGHLIGHTS OF PRESCRIBING INFORMATION

These highlights do not include all the information needed to use VIMPAT® safely and effectively. See full prescribing information for VIMPAT.

VIMPAT® (lacosamide) film coated tablet, for oral use, CV
VIMPAT® (lacosamide) injection, for intravenous use, CV
VIMPAT® (lacosamide) oral solution, CV
Initial U.S. Approval: 2008

RECENT MAJOR CHANGES

Indications and Usage (1.1) 10/2021
Dosage and Administration (2.1, 2.5) 10/2021

INDICATIONS AND USAGE

VIMPAT is indicated for:

- Treatment of partial-onset seizures in patients 1 month of age and older (1.1)
- Adjunctive therapy in the treatment of primary generalized tonic-clonic seizures in patients 4 years of age and older (1.2)

DOSAGE AND ADMINISTRATION

- *Adults (17 years and older):*
 - Initial dosage for monotherapy for the treatment of partial-onset seizures is 100 mg twice daily (2.1)
 - Initial dosage for adjunctive therapy for the treatment of partial-onset seizures or primary generalized tonic-clonic seizures is 50 mg twice daily (2.1)
 - Maximum recommended dosage for monotherapy and adjunctive therapy is 200 mg twice daily (2.1)
- *Pediatric Patients 1 month to less than 17 years:* The recommended dosage is based on body weight and is administered orally twice daily (2.1)
- Increase dosage based on clinical response and tolerability, no more frequently than once per week (2.1)
- Injection: for intravenous use only when oral administration is temporarily not feasible; the recommended dosage is based on body weight and is administered two or three times daily over 15 to 60 minutes; obtaining ECG before initiation is recommended in certain patients (2.6, 5.3)
- Dose adjustment is recommended for severe renal impairment (2.3, 12.3)
- Dose adjustment is recommended for mild or moderate hepatic impairment; use in patients with severe hepatic impairment is not recommended (2.4, 12.3)

DOSAGE FORMS AND STRENGTHS

- 50 mg, 100 mg, 150 mg, 200 mg tablets (3)
- 200 mg/20 mL single-dose vial for intravenous use (3)
- 10 mg/mL oral solution (3)

CONTRAINDICATIONS

None (4)

WARNINGS AND PRECAUTIONS

- Monitor patients for suicidal behavior and ideation (5.1)
- VIMPAT may cause dizziness and ataxia (5.2)
- Cardiac Rhythm and Conduction Abnormalities: Obtaining ECG before beginning and after titration to steady-state maintenance is recommended in patients with underlying proarrhythmic conditions or on concomitant medications that affect cardiac conduction; closely monitor these patients (5.3, 7.2)
- VIMPAT may cause syncope (5.4)
- VIMPAT should be gradually withdrawn to minimize the potential of increased seizure frequency (5.5)
- Drug Reaction with Eosinophilia and Systemic Symptoms (DRESS)/Multi-Organ Hypersensitivity: Discontinue if no alternate etiology (5.6)

ADVERSE REACTIONS

- Adjunctive therapy: Most common adverse reactions in adults (≥10% and greater than placebo) are diplopia, headache, dizziness, nausea, and somnolence (6.1)
- Monotherapy: Most common adverse reactions are similar to those seen in adjunctive therapy studies (6.1)
- Pediatric patients: Adverse reactions are similar to those seen in adult patients (6.1)

To report SUSPECTED ADVERSE REACTIONS, contact UCB, Inc. at 1-844-599-2273 or FDA at 1-800-FDA-1088 or www.fda.gov/medwatch

USE IN SPECIFIC POPULATIONS

- Pregnancy: Based on animal data, may cause fetal harm (8.1)

See 17 for PATIENT COUNSELING INFORMATION and Medication Guide

Revised: 9/2022

FULL PRESCRIBING INFORMATION: CONTENTS*

1 INDICATIONS AND USAGE

- 1.1 Partial-Onset Seizures
- 1.2 Primary Generalized Tonic-Clonic Seizures

2 DOSAGE AND ADMINISTRATION

- 2.1 Dosage Information
- 2.2 Converting From a Single Antiepileptic (AED) to VIMPAT Monotherapy for the Treatment of Partial-Onset Seizures
- 2.3 Dosage Information for Patients with Renal Impairment
- 2.4 Dosage Information for Patients with Hepatic Impairment
- 2.5 Administration Instructions for VIMPAT Tablets and Oral Solution
- 2.6 Preparation and Administration Information for VIMPAT Injection
- 2.7 Discontinuation of VIMPAT

3 DOSAGE FORMS AND STRENGTHS

4 CONTRAINDICATIONS

5 WARNINGS AND PRECAUTIONS

- 5.1 Suicidal Behavior and Ideation
- 5.2 Dizziness and Ataxia
- 5.3 Cardiac Rhythm and Conduction Abnormalities
- 5.4 Syncope
- 5.5 Withdrawal of Antiepileptic Drugs (AEDs)
- 5.6 Drug Reaction with Eosinophilia and Systemic Symptoms (DRESS)/Multi-Organ Hypersensitivity
- 5.7 Risks in Patients with Phenylketonuria

6 ADVERSE REACTIONS

- 6.1 Clinical Trials Experience
- 6.2 Postmarketing Experience

7 DRUG INTERACTIONS

- 7.1 Strong CYP3A4 or CYP2C9 Inhibitors
- 7.2 Concomitant Medications that Affect Cardiac Conduction

8 USE IN SPECIFIC POPULATIONS

- 8.1 Pregnancy
- 8.2 Lactation

8.4 Pediatric Use

8.5 Geriatric Use

8.6 Renal Impairment

8.7 Hepatic Impairment

9 DRUG ABUSE AND DEPENDENCE

9.1 Controlled Substance

9.2 Abuse

9.3 Dependence

10 OVERDOSAGE

11 DESCRIPTION

11.1 VIMPAT Tablets

11.2 VIMPAT Injection

11.3 VIMPAT Oral Solution

12 CLINICAL PHARMACOLOGY

12.1 Mechanism of Action

12.2 Pharmacodynamics

12.3 Pharmacokinetics

13 NONCLINICAL TOXICOLOGY

13.1 Carcinogenesis, Mutagenesis, Impairment of Fertility

14 CLINICAL STUDIES

14.1 Monotherapy in Patients with Partial-Onset Seizures

14.2 Adjunctive Therapy in Patients with Partial-Onset Seizures

14.3 Adjunctive Therapy in Patients with Primary Generalized Tonic-Clonic Seizures

16 HOW SUPPLIED/STORAGE AND HANDLING

16.1 How Supplied

16.2 Storage and Handling

17 PATIENT COUNSELING INFORMATION

* Sections or subsections omitted from the full prescribing information are not listed.

FULL PRESCRIBING INFORMATION

1 INDICATIONS AND USAGE

1.1 Partial-Onset Seizures

VIMPAT is indicated for the treatment of partial-onset seizures in patients 1 month of age and older.

1.2 Primary Generalized Tonic-Clonic Seizures

VIMPAT is indicated as adjunctive therapy in the treatment of primary generalized tonic-clonic seizures in patients 4 years of age and older.

2 DOSAGE AND ADMINISTRATION

2.1 Dosage Information

The recommended dosage for monotherapy and adjunctive therapy for partial-onset seizures in patients 1 month of age and older and for adjunctive therapy for primary generalized tonic-clonic seizures in patients 4 years of age and older is included in Table 1. In pediatric patients, the recommended dosing regimen is dependent upon body weight. Dosage should be increased based on clinical response and tolerability, no more frequently than once per week. Titration increments should not exceed those shown in Table 1.

Table 1: Recommended Dosages for Partial-Onset Seizures (Monotherapy or Adjunctive Therapy) in Patients 1 Month and Older, and for Primary Generalized Tonic-Clonic Seizures (Adjunctive Therapy) in Patients 4 Years of Age and Older*

Age and Body Weight	Initial Dosage	Titration Regimen	Maintenance Dosage
Adults (17 years and older)	Monotherapy**: 100 mg twice daily (200 mg per day) Adjunctive Therapy: 50 mg twice daily (100 mg per day)	Increase by 50 mg twice daily (100 mg per day) every week	Monotherapy**: 150 mg to 200 mg twice daily (300 mg to 400 mg per day) Adjunctive Therapy: 100 mg to 200 mg twice daily (200 mg to 400 mg per day)
	Alternate Initial Dosage: 200 mg single loading dose, followed 12 hours later by 100 mg twice daily		
Pediatric patients weighing 50 kg or more	50 mg twice daily (100 mg per day)	Increase by 50 mg twice daily (100 mg per day) every week	Monotherapy**: 150 mg to 200 mg twice daily (300 mg to 400 mg per day) Adjunctive Therapy: 100 mg to 200 mg twice daily (200 mg to 400 mg per day)

Age and Body Weight	Initial Dosage	Titration Regimen	Maintenance Dosage
Pediatric patients weighing 30 kg to less than 50 kg	1 mg/kg twice daily (2 mg/kg/day)	Increase by 1 mg/kg twice daily (2 mg/kg/day) every week	2 mg/kg to 4 mg/kg twice daily (4 mg/kg/day to 8 mg/kg/day)
Pediatric patients weighing 11 kg to less than 30 kg	1 mg/kg twice daily (2 mg/kg/day)	Increase by 1 mg/kg twice daily (2 mg/kg/day) every week	3 mg/kg to 6 mg/kg twice daily (6 mg/kg/day to 12 mg/kg/day)
Pediatric patients weighing 6 kg to less than 11 kg [±]			
Pediatric patients weighing less than 6 kg [±]	Intravenous: 0.66 mg/kg three times daily (2 mg/kg/day)	Intravenous: Increase by 0.66 mg/kg three times daily (2 mg/kg/day) every week	Intravenous: 2.5 mg/kg to 5 mg/kg three times daily (7.5 mg/kg/day to 15 mg/kg/day)
	Oral: 1 mg/kg twice daily (2 mg/kg/day)	Oral: Increase by 1 mg/kg twice daily (2 mg/kg/day) every week	Oral: 3.75 mg/kg to 7.5 mg/kg twice daily (7.5 mg/kg/day to 15 mg/kg/day)

*when not specified, the dosage is the same for monotherapy for partial-onset seizures and adjunctive therapy for partial-onset seizures or primary generalized tonic-clonic seizures. Oral and intravenous dosages are the same unless specified.

**Monotherapy for partial-onset seizures only

± indicated only for partial-onset seizures

In adjunctive clinical trials in adult patients with partial-onset seizures, a dosage higher than 200 mg twice daily (400 mg per day) was not more effective and was associated with a substantially higher rate of adverse reactions [see *Adverse Reactions (6.1) and Clinical Studies (14.2)*].

VIMPAT Injection Dosage

VIMPAT injection may be used when oral administration is temporarily not feasible [see *Dosage and Administration (2.6) and Warnings and Precautions (5.3)*]. VIMPAT injection can be administered intravenously to adult and pediatric patients weighing 6 kg or more with the same dosing regimens described for oral dosing. For pediatric patients weighing less than 6 kg, VIMPAT injection may be initiated with a dose of 0.66 mg/kg three times daily (see Table 1).

The clinical study experience of intravenous VIMPAT is limited to 5 days of consecutive treatment.

Loading Dose in Adult Patients (17 Years and Older)

VIMPAT and VIMPAT injection may be initiated in adult patients with a single loading dose of 200 mg, followed approximately 12 hours later by 100 mg twice daily (200 mg per day).

The maintenance dose regimen should be continued for one week. VIMPAT can then be titrated as recommended in Table 1. The adult loading dose should be administered with medical supervision because of

the increased incidence of CNS adverse reactions [*see Adverse Reactions (6.1) and Clinical Pharmacology (12.3)*].

The use of a loading dose in pediatric patients has not been studied.

2.2 Converting From a Single Antiepileptic (AED) to VIMPAT Monotherapy for the Treatment of Partial-Onset Seizures

For patients who are already on a single AED and will convert to VIMPAT monotherapy, withdrawal of the concomitant AED should not occur until the therapeutic dosage of VIMPAT is achieved and has been administered for at least 3 days. A gradual withdrawal of the concomitant AED over at least 6 weeks is recommended.

2.3 Dosage Information for Patients with Renal Impairment

For patients with mild to moderate renal impairment, no dosage adjustment is necessary.

For patients with severe renal impairment [creatinine clearance (CL_{CR}) less than 30 mL/min as estimated by the Cockcroft-Gault equation for adults; CL_{CR} less than 30 mL/min/1.73m² as estimated by the Schwartz equation for pediatric patients] or end-stage renal disease, a reduction of 25% of the maximum dosage is recommended.

In all patients with renal impairment, the dose titration should be performed with caution.

Hemodialysis

VIMPAT is effectively removed from plasma by hemodialysis. Following a 4-hour hemodialysis treatment, dosage supplementation of up to 50% should be considered.

Concomitant Strong CYP3A4 or CYP2C9 Inhibitors

Dose reduction may be necessary in patients with renal impairment who are taking strong inhibitors of CYP3A4 and CYP2C9 [*see Drug Interactions (7.1), Use in Specific Populations (8.6), and Clinical Pharmacology (12.3)*].

2.4 Dosage Information for Patients with Hepatic Impairment

For patients with mild or moderate hepatic impairment, a reduction of 25% of the maximum dosage is recommended. The dose titration should be performed with caution in patients with hepatic impairment. VIMPAT use is not recommended in patients with severe hepatic impairment.

Concomitant Strong CYP3A4 and CYP2C9 Inhibitors

Dose reduction may be necessary in patients with hepatic impairment who are taking strong inhibitors of CYP3A4 and CYP2C9 [*see Drug Interactions (7.1), Use in Specific Populations (8.7), and Clinical Pharmacology (12.3)*].

2.5 Administration Instructions for VIMPAT Tablets and Oral Solution

VIMPAT tablets and oral solution may be taken with or without food.

VIMPAT Tablets

VIMPAT tablets should be swallowed whole with liquid. Do not divide VIMPAT tablets.

VIMPAT Oral Solution

A calibrated measuring device is recommended to measure and deliver the prescribed dose accurately. A household teaspoon or tablespoon is not an adequate measuring device.

VIMPAT oral solution may also be administered using a nasogastric tube or gastrostomy tube.

Discard any unused VIMPAT oral solution remaining after 6 months of first opening the bottle.

2.6 Preparation and Administration Information for VIMPAT Injection

Preparation

VIMPAT injection can be administered intravenously without further dilution or may be mixed with diluents listed below. The diluted solution should not be stored for more than 4 hours at room temperature.

Diluents:

Sodium Chloride Injection 0.9% (w/v)

Dextrose Injection 5% (w/v)

Lactated Ringer's Injection

Parenteral drug products should be inspected visually for particulate matter and discoloration prior to administration, whenever solution and container permit. Product with particulate matter or discoloration should not be used.

VIMPAT injection is for single-dose only. Any unused portion of VIMPAT injection should be discarded.

Administration

The recommended infusion duration is 30 to 60 minutes; however, infusions as rapid as 15 minutes can be administered in adults if required [see *Adverse Reactions (6.1) and Clinical Pharmacology (12.3)*]. Infusion durations less than 30 minutes are generally not recommended in pediatric patients [see *Adverse Reactions (6.1)*].

Intravenous infusion of VIMPAT may cause bradycardia, AV blocks, and ventricular tachyarrhythmia [see *Warnings and Precautions (5.3)*]. Obtaining an ECG before beginning VIMPAT and after VIMPAT is titrated to steady-state maintenance dose is recommended in patients with underlying proarrhythmic conditions or on concomitant medications that affect cardiac conduction [see *Drug Interactions (7.2)*].

Storage and Stability

The diluted solution should not be stored for more than 4 hours at room temperature. Any unused portion of VIMPAT injection should be discarded.

2.7 Discontinuation of VIMPAT

When discontinuing VIMPAT, a gradual withdrawal over at least 1 week is recommended [see *Warnings and Precautions (5.5)*].

3 DOSAGE FORMS AND STRENGTHS

VIMPAT Tablets

- 50 mg: pink, oval, film-coated, debossed with "SP" on one side and "50" on the other

- 100 mg: dark yellow, oval, film-coated, debossed with "SP" on one side and "100" on the other
- 150 mg: salmon, oval, film-coated, debossed with "SP" on one side and "150" on the other
- 200 mg: blue, oval, film-coated, debossed with "SP" on one side and "200" on the other

VIMPAT Injection

- 200 mg/20 mL: clear, colorless sterile solution in single-dose vials

VIMPAT Oral Solution

- 10 mg/mL: clear, colorless to yellow or yellow-brown, strawberry-flavored liquid

4 CONTRAINDICATIONS

None.

5 WARNINGS AND PRECAUTIONS

5.1 Suicidal Behavior and Ideation

Antiepileptic drugs (AEDs), including VIMPAT, increase the risk of suicidal thoughts or behavior in patients taking these drugs for any indication. Patients treated with any AED for any indication should be monitored for the emergence or worsening of depression, suicidal thoughts or behavior, and/or any unusual changes in mood or behavior.

Pooled analyses of 199 placebo-controlled clinical trials (mono- and adjunctive therapy) of 11 different AEDs showed that patients randomized to one of the AEDs had approximately twice the risk (adjusted Relative Risk 1.8, 95% CI:1.2, 2.7) of suicidal thinking or behavior compared to patients randomized to placebo. In these trials, which had a median treatment duration of 12 weeks, the estimated incidence of suicidal behavior or ideation among 27,863 AED-treated patients was 0.43%, compared to 0.24% among 16,029 placebo-treated patients, representing an increase of approximately one case of suicidal thinking or behavior for every 530 patients treated. There were four suicides in drug-treated patients in the trials and none in placebo-treated patients, but the number of events is too small to allow any conclusion about drug effect on suicide.

The increased risk of suicidal thoughts or behavior with AEDs was observed as early as one week after starting treatment with AEDs and persisted for the duration of treatment assessed. Because most trials included in the analysis did not extend beyond 24 weeks, the risk of suicidal thoughts or behavior beyond 24 weeks could not be assessed.

The risk of suicidal thoughts or behavior was generally consistent among drugs in the data analyzed. The finding of increased risk with AEDs of varying mechanisms of action and across a range of indications suggests that the risk applies to all AEDs used for any indication. The risk did not vary substantially by age (5-100 years) in the clinical trials analyzed.

Table 2 shows absolute and relative risk by indication for all evaluated AEDs.

Table 2: Risk by Indication for Antiepileptic Drugs in the Pooled Analysis

Indication	Placebo Patients with Events Per 1000 Patients	Drug Patients with Events Per 1000 Patients	Relative Risk: Incidence of Events in Drug Patients/Incidence in Placebo Patients	Risk Difference: Additional Drug Patients with Events Per 1000 Patients
Epilepsy	1.0	3.4	3.5	2.4
Psychiatric	5.7	8.5	1.5	2.9
Other	1.0	1.8	1.9	0.9
Total	2.4	4.3	1.8	1.9

The relative risk for suicidal thoughts or behavior was higher in clinical trials for epilepsy than in clinical trials for psychiatric or other conditions, but the absolute risk differences were similar.

Anyone considering prescribing VIMPAT or any other AED must balance this risk with the risk of untreated illness. Epilepsy and many other illnesses for which antiepileptics are prescribed are themselves associated with morbidity and mortality and an increased risk of suicidal thoughts and behavior. Should suicidal thoughts and behavior emerge during treatment, the prescriber needs to consider whether the emergence of these symptoms in any given patient may be related to the illness being treated.

5.2 Dizziness and Ataxia

VIMPAT may cause dizziness and ataxia in adult and pediatric patients. In adult patients with partial-onset seizures taking 1 to 3 concomitant AEDs, dizziness was experienced by 25% of patients randomized to the recommended doses (200 to 400 mg/day) of VIMPAT (compared with 8% of placebo patients) and was the adverse event most frequently leading to discontinuation (3%). Ataxia was experienced by 6% of patients randomized to the recommended doses (200 to 400 mg/day) of VIMPAT (compared to 2% of placebo patients). The onset of dizziness and ataxia was most commonly observed during titration. There was a substantial increase in these adverse events at doses higher than 400 mg/day [see *Adverse Reactions (6.1)*].

5.3 Cardiac Rhythm and Conduction Abnormalities

PR Interval Prolongation, Atrioventricular Block, and Ventricular Tachyarrhythmia

Dose-dependent prolongations in PR interval with VIMPAT have been observed in clinical studies in adult patients and in healthy volunteers [see *Clinical Pharmacology (12.2)*]. In adjunctive clinical trials in adult patients with partial-onset seizures, asymptomatic first-degree atrioventricular (AV) block was observed as an adverse reaction in 0.4% (4/944) of patients randomized to receive VIMPAT and 0% (0/364) of patients randomized to receive placebo. One case of profound bradycardia was observed in a patient during a 15-minute infusion of 150 mg VIMPAT. When VIMPAT is given with other drugs that prolong the PR interval, further PR prolongation is possible.

In the postmarketing setting, there have been reports of cardiac arrhythmias in patients treated with VIMPAT, including bradycardia, AV block, and ventricular tachyarrhythmia, which have rarely resulted in asystole, cardiac arrest, and death. Most, although not all, cases have occurred in patients with underlying proarrhythmic conditions, or in those taking concomitant medications that affect cardiac conduction or prolong the PR interval. These events have occurred with both oral and intravenous routes of administration and at prescribed doses as well as in the setting of overdose [see *Overdosage (10)*].

VIMPAT should be used with caution in patients with underlying proarrhythmic conditions such as known cardiac conduction problems (e.g., marked first-degree AV block, second-degree or higher AV block and sick sinus syndrome without pacemaker), severe cardiac disease (such as myocardial ischemia or heart failure, or structural heart disease), and cardiac sodium channelopathies (e.g., Brugada Syndrome). VIMPAT should also be used with caution in patients on concomitant medications that affect cardiac conduction, including sodium channel blockers, beta-blockers, calcium channel blockers, potassium channel blockers, and medications that prolong the PR interval [see *Drug Interactions (7.2)*]. In such patients, obtaining an ECG before beginning VIMPAT, and after VIMPAT is titrated to steady-state maintenance dose, is recommended. In addition, these patients should be closely monitored if they are administered VIMPAT through the intravenous route [see *Adverse Reactions (6.1)* and *Drug Interactions (7.2)*].

Atrial Fibrillation and Atrial Flutter

In the short-term investigational trials of VIMPAT in adult patients with partial-onset seizures there were no cases of atrial fibrillation or flutter. Both atrial fibrillation and atrial flutter have been reported in open label partial-onset seizure trials and in postmarketing experience. In adult patients with diabetic neuropathy, for which VIMPAT is not indicated, 0.5% of patients treated with VIMPAT experienced an adverse reaction of atrial fibrillation or atrial flutter, compared to 0% of placebo-treated patients. VIMPAT administration may predispose to atrial arrhythmias (atrial fibrillation or flutter), especially in patients with diabetic neuropathy and/or cardiovascular disease.

5.4 Syncope

In the short-term controlled trials of VIMPAT in adult patients with partial-onset seizures with no significant system illnesses, there was no increase in syncope compared to placebo. In the short-term controlled trials in adult patients with diabetic neuropathy, for which VIMPAT is not indicated, 1.2% of patients who were treated with VIMPAT reported an adverse reaction of syncope or loss of consciousness, compared with 0% of placebo-treated patients with diabetic neuropathy. Most of the cases of syncope were observed in patients receiving doses above 400 mg/day. The cause of syncope was not determined in most cases. However, several were associated with either changes in orthostatic blood pressure, atrial flutter/fibrillation (and associated tachycardia), or bradycardia. Cases of syncope have also been observed in open-label clinical partial-onset seizure studies in adult and pediatric patients. These cases were associated with a history of risk factors for cardiac disease and the use of drugs that slow AV conduction.

5.5 Withdrawal of Antiepileptic Drugs (AEDs)

As with all AEDs, VIMPAT should be withdrawn gradually (over a minimum of 1 week) to minimize the potential of increased seizure frequency in patients with seizure disorders.

5.6 Drug Reaction with Eosinophilia and Systemic Symptoms (DRESS)/Multi-Organ Hypersensitivity

Drug Reaction with Eosinophilia and Systemic Symptoms (DRESS), also known as multi-organ hypersensitivity, has been reported in patients taking antiepileptic drugs, including VIMPAT. Some of these events have been fatal or life-threatening. DRESS typically, although not exclusively, presents with fever, rash, lymphadenopathy and/or facial swelling, in association with other organ system involvement, such as hepatitis, nephritis, hematologic abnormalities, myocarditis, or myositis, sometimes resembling an acute viral infection. Eosinophilia is often present. This disorder is variable in its expression, and other organ systems not noted here may be involved. It is important to note that early manifestations of hypersensitivity (e.g., fever, lymphadenopathy) may be present even though rash is not evident. If such signs or symptoms are present, the patient should be evaluated immediately. VIMPAT should be discontinued if an alternative etiology for the signs or symptoms cannot be established.

5.7 Risks in Patients with Phenylketonuria

Phenylalanine can be harmful in patients with phenylketonuria (PKU). VIMPAT oral solution contains aspartame, a source of phenylalanine. A 200 mg dose of VIMPAT oral solution (equivalent to 20 mL) contains 0.32 mg of phenylalanine. Before prescribing VIMPAT oral solution to a patient with PKU, consider the combined daily amount of phenylalanine from all sources, including VIMPAT oral solution.

6 ADVERSE REACTIONS

The following serious adverse reactions are described below and elsewhere in the labeling:

- Suicidal Behavior and Ideation [*see Warnings and Precautions (5.1)*]
- Dizziness and Ataxia [*see Warnings and Precautions (5.2)*]
- Cardiac Rhythm and Conduction Abnormalities [*see Warnings and Precautions (5.3)*]
- Syncope [*see Warnings and Precautions (5.4)*]
- Drug Reaction with Eosinophilia and Systemic Symptoms (DRESS)/Multiorgan Hypersensitivity Reactions [*see Warnings and Precautions (5.6)*]

6.1 Clinical Trials Experience

Because clinical trials are conducted under widely varying conditions, adverse reaction rates observed in the clinical trials of a drug cannot be directly compared to rates in the clinical trials of another drug and may not reflect the rates observed in practice.

VIMPAT Tablet and Oral Solution in Adults

In the premarketing development of adjunctive therapy for partial-onset seizures, 1327 adult patients received VIMPAT tablets in controlled and uncontrolled trials, of whom 1000 were treated for longer than 6 months, and 852 for longer than 12 months. The monotherapy development program for partial-onset seizures included 425 adult patients, 310 of whom were treated for longer than 6 months, and 254 for longer than 12 months.

Partial-Onset Seizures

Monotherapy Historical-Control Trial (Study 1)

In the monotherapy trial for partial-onset seizures, 16% of patients randomized to receive VIMPAT at the recommended doses of 300 and 400 mg/day discontinued from the trial as a result of an adverse reaction. The adverse reaction most commonly ($\geq 1\%$ on VIMPAT) leading to discontinuation was dizziness.

Adverse reactions that occurred in this study were generally similar to those that occurred in adjunctive placebo-controlled studies. One adverse reaction, insomnia, occurred at a rate of $\geq 2\%$ and was not reported at a similar rate in previous studies. This adverse reaction has also been observed in postmarketing experience [*see Adverse Reactions (6.2)*]. Because this study did not include a placebo control group, causality could not be established.

Dizziness, headache, nausea, somnolence, and fatigue all occurred at lower incidences during the AED Withdrawal Phase and Monotherapy Phase, compared with the Titration Phase [*see Clinical Studies (14.1)*].

Adjunctive Therapy Controlled Trials (Studies 2, 3, and 4)

In adjunctive therapy controlled clinical trials for partial-onset seizures, the rate of discontinuation as a result of an adverse reaction was 8% and 17% in patients randomized to receive VIMPAT at the recommended doses of 200 and 400 mg/day, respectively, 29% at 600 mg/day (1.5 times greater than the

maximum recommended dose), and 5% in patients randomized to receive placebo. The adverse reactions most commonly (>1% on VIMPAT and greater than placebo) leading to discontinuation were dizziness, ataxia, vomiting, diplopia, nausea, vertigo, and blurred vision.

Table 3 gives the incidence of adverse reactions that occurred in $\geq 2\%$ of adult patients with partial-onset seizures in the VIMPAT total group and for which the incidence was greater than placebo.

Table 3: Adverse Reactions Incidence in Adjunctive Therapy Pooled, Placebo-Controlled Trials in Adult Patients with Partial-Onset Seizures (Studies 2, 3, and 4)

Adverse Reaction	Placebo N=364 %	VIMPAT 200 mg/day N=270 %	VIMPAT 400 mg/day N=471 %	VIMPAT 600 mg/day* N=203 %	VIMPAT Total N=944 %
Ear and labyrinth disorder					
Vertigo	1	5	3	4	4
Eye disorders					
Diplopia	2	6	10	16	11
Blurred Vision	3	2	9	16	8
Gastrointestinal disorders					
Nausea	4	7	11	17	11
Vomiting	3	6	9	16	9
Diarrhea	3	3	5	4	4
General disorders and administration site conditions					
Fatigue	6	7	7	15	9
Gait disturbance	<1	<1	2	4	2
Asthenia	1	2	2	4	2
Injury, poisoning and procedural complications					
Contusion	3	3	4	2	3
Skin laceration	2	2	3	3	3
Nervous system disorders					
Dizziness	8	16	30	53	31
Headache	9	11	14	12	13
Ataxia	2	4	7	15	8
Somnolence	5	5	8	8	7
Tremor	4	4	6	12	7
Nystagmus	4	2	5	10	5
Balance disorder	0	1	5	6	4
Memory impairment	2	1	2	6	2
Psychiatric disorders					
Depression	1	2	2	2	2
Skin and subcutaneous disorders					
Pruritus	1	3	2	3	2

*600 mg dose is 1.5 times greater than the maximum recommended dose.

The overall adverse reaction rate was similar in male and female patients. Although there were few non-Caucasian patients, no differences in the incidences of adverse reactions compared to Caucasian patients were observed.

VIMPAT Tablet and Oral Solution in Pediatric Patients

Safety of VIMPAT was evaluated in clinical studies of pediatric patients 1 month to less than 17 years of age for the treatment of partial-onset seizures. Across studies in pediatric patients with partial-onset seizures, 847 patients 1 month to less than 17 years of age received VIMPAT oral solution or tablet, of whom 596 received VIMPAT for at least 1 year. Adverse reactions reported in clinical studies of pediatric patients 1 month to less than 17 years of age were similar to those seen in adult patients.

Primary Generalized Tonic-Clonic Seizures in Patients (4 Years of Age and Older) Adjunctive Therapy Trial (Study 5)

In the adjunctive therapy placebo-controlled trial for primary generalized tonic-clonic seizures, adverse reactions that occurred in the study were generally similar to those that occurred in partial-onset seizure placebo-controlled studies. The most common adverse reactions ($\geq 10\%$ on VIMPAT) reported in patients treated with VIMPAT were dizziness (23%), somnolence (17%), headache (14%), and nausea (10%), compared to 7%, 14%, 10%, and 6%, respectively, of patients who received placebo. Additionally, an adverse reaction not previously reported of myoclonic epilepsy was reported in 3% of patients treated with VIMPAT compared to 1% of patients who received placebo. It is also noted that 2 patients receiving VIMPAT had acute worsening of seizures shortly after drug initiation, including one episode of status epilepticus, compared to no patients receiving placebo.

Laboratory Abnormalities

Abnormalities in liver function tests have occurred in controlled trials with VIMPAT in adult patients with partial-onset seizures who were taking 1 to 3 concomitant anti-epileptic drugs. Elevations of ALT to $\geq 3x$ ULN occurred in 0.7% (7/935) of VIMPAT patients and 0% (0/356) of placebo patients. One case of hepatitis with transaminases $>20x$ ULN occurred in one healthy subject 10 days after VIMPAT treatment completion, along with nephritis (proteinuria and urine casts). Serologic studies were negative for viral hepatitis. Transaminases returned to normal within one month without specific treatment. At the time of this event, bilirubin was normal. The hepatitis/nephritis was interpreted as a delayed hypersensitivity reaction to VIMPAT.

Other Adverse Reactions

The following is a list of adverse reactions reported by patients treated with VIMPAT in all clinical trials in adult patients, including controlled trials and long-term open-label extension trials. Adverse reactions addressed in other tables or sections are not listed here.

Blood and lymphatic system disorders: neutropenia, anemia

Cardiac disorders: palpitations

Ear and labyrinth disorders: tinnitus

Gastrointestinal disorders: constipation, dyspepsia, dry mouth, oral hypoesthesia

General disorders and administration site conditions: irritability, pyrexia, feeling drunk

Injury, poisoning, and procedural complications: fall

Musculoskeletal and connective tissue disorders: muscle spasms

Nervous system disorders: paresthesia, cognitive disorder, hypoaesthesia, dysarthria, disturbance in attention, cerebellar syndrome

Psychiatric disorders: confusional state, mood altered, depressed mood

VIMPAT Injection

Adult Patients (17 Years and Older)

Adverse reactions with intravenous administration to adult patients with partial-onset seizures generally were similar to those that occurred with the oral formulation, although intravenous administration was associated with local adverse reactions such as injection site pain or discomfort (2.5%), irritation (1%), and erythema (0.5%). One case of profound bradycardia (26 bpm: BP 100/60 mmHg) occurred in a patient during a 15-minute infusion of 150 mg VIMPAT. This patient was on a beta-blocker. Infusion was discontinued and the patient experienced a rapid recovery.

The safety of a 15-minute loading dose administration of VIMPAT Injection 200 mg to 400 mg followed by oral administration of VIMPAT given twice daily at the same total daily dose as the initial intravenous infusion was assessed in an open-label study in adult patients with partial-onset seizures. Patients had to have been maintained on a stable dose regimen of 1 to 2 marketed antiepileptics for at least 28 days prior to treatment assignment. Treatment groups were as follows:

- Single dose of intravenous VIMPAT Injection 200 mg followed by oral VIMPAT 200 mg/day (100 mg every 12 hours)
- Single dose of intravenous VIMPAT Injection 300 mg followed by oral VIMPAT 300 mg/day (150 mg every 12 hours)
- Single dose of intravenous VIMPAT Injection 400 mg followed by oral VIMPAT 400 mg/day (200 mg every 12 hours).

Table 4 gives the incidence of adverse reactions that occurred in $\geq 5\%$ of adult patients in any VIMPAT dosing group.

Table 4: Adverse Reactions in a 15-minute Infusion Study in Adult Patients with Partial-Onset Seizures

Adverse Reaction	VIMPAT 200 mg N=25 %	VIMPAT 300 mg N=50 %	VIMPAT 400 mg N=25 %	VIMPAT Total N=100 %
Eye disorders				
Diplopia	4	6	20	9
Blurred Vision	0	4	12	5
Gastrointestinal disorders				
Nausea	0	16	24	14
Dry mouth	0	6	12	6
Vomiting	0	4	12	5
Oral Paresthesia	4	4	8	5
Oral Hypoaesthesia	0	6	8	5
Diarrhea	0	8	0	4
General disorders/administration site conditions				

Adverse Reaction	VIMPAT 200 mg N=25 %	VIMPAT 300 mg N=50 %	VIMPAT 400 mg N=25 %	VIMPAT Total N=100 %
Fatigue	0	18	12	12
Gait disturbance	8	2	0	3
Chest pain	0	0	12	3
Nervous system disorders				
Dizziness	20	46	60	43
Somnolence	0	34	36	26
Headache	8	4	16	8
Paresthesia	8	6	4	6
Tremor	0	6	4	4
Abnormal Coordination	0	6	0	3
Skin & subcutaneous tissue disorders				
Pruritus	0	6	4	4
Hyperhidrosis	0	0	8	2

Adverse reactions that occurred with infusion of VIMPAT 200 mg over 15-minutes followed by VIMPAT 100 mg administered orally twice per day were similar in frequency to those that occurred in 3-month adjunctive therapy controlled trials. Considering the difference in period of observations (1 week vs. 3 months), the incidence of CNS adverse reactions, such as dizziness, somnolence, and paresthesia may be higher with 15-minute administration of VIMPAT Injection than with administration over a 30-to 60-minute period.

The adverse reactions associated with VIMPAT injection in adult patients with primary generalized tonic-clonic seizures are expected to be similar to those seen in adults with partial-onset seizures.

Pediatric Patients (1 Month to less than 17 Years of Age)

The safety of VIMPAT injection was evaluated in a multicenter, open-label study of 103 pediatric patients 1 month to less than 17 years of age with epilepsy. Infusions were primarily administered over a 30 to 60 minute time period; infusion times less than 30 minutes were not adequately studied in pediatric patients [see *Dosage and Administration (2.6)*]. Although no serious or severe adverse reactions were noted at the time of infusion in this small study, the adverse reactions associated with VIMPAT injection in pediatric patients are expected to be similar to those noted in adults.

6.2 Postmarketing Experience

The following adverse reactions have been identified during post-approval use of VIMPAT. Because these reactions are reported voluntarily from a population of uncertain size, it is not always possible to reliably estimate their frequency or establish a causal relationship to drug exposure.

Blood and lymphatic system disorders: Agranulocytosis

Psychiatric disorders: Aggression, agitation, hallucination, insomnia, psychotic disorder

Skin and subcutaneous tissue disorders: Angioedema, rash, urticaria, Stevens-Johnson syndrome, toxic epidermal necrolysis.

Neurologic disorders: Dyskinesia, new or worsening seizures

7 DRUG INTERACTIONS

7.1 Strong CYP3A4 or CYP2C9 Inhibitors

Patients with renal or hepatic impairment who are taking strong inhibitors of CYP3A4 and CYP2C9 may have a significant increase in exposure to VIMPAT. Dose reduction may be necessary in these patients.

7.2 Concomitant Medications that Affect Cardiac Conduction

VIMPAT should be used with caution in patients on concomitant medications that affect cardiac conduction (sodium channel blockers, beta-blockers, calcium channel blockers, potassium channel blockers) including those that prolong PR interval (including sodium channel blocking AEDs), because of a risk of AV block, bradycardia, or ventricular tachyarrhythmia. In such patients, obtaining an ECG before beginning VIMPAT, and after VIMPAT is titrated to steady-state, is recommended. In addition, these patients should be closely monitored if they are administered VIMPAT through the intravenous route [*see Warnings and Precautions (5.3)*].

8 USE IN SPECIFIC POPULATIONS

8.1 Pregnancy

Pregnancy Exposure Registry

There is a pregnancy exposure registry that monitors pregnancy outcomes in women exposed to antiepileptic drugs (AEDs), such as VIMPAT, during pregnancy. Encourage women who are taking VIMPAT during pregnancy to enroll in the North American Antiepileptic Drug (NAAED) pregnancy registry by calling 1-888-233-2334 or visiting <http://www.aedpregnancyregistry.org/>.

Risk Summary

Available data from the North American Antiepileptic Drug (NAAED) pregnancy registry, a prospective cohort study, case reports, and a case series with VIMPAT use in pregnant women are insufficient to identify a drug-associated risk of major birth defects, miscarriage or other adverse maternal or fetal outcomes. Lacosamide produced developmental toxicity (increased embryofetal and perinatal mortality, growth deficit) in rats following administration during pregnancy. Developmental neurotoxicity was observed in rats following administration during a period of postnatal development corresponding to the third trimester of human pregnancy. These effects were observed at doses associated with clinically relevant plasma exposures (*see Data*).

The background risk of major birth defects and miscarriage for the indicated population is unknown. All pregnancies have a background risk of birth defect, loss, or other adverse outcomes. In the U.S. general population the estimated background risk of major birth defects and miscarriage in clinically recognized pregnancies is 2-4% and 15-20%, respectively.

Data

Animal Data

Oral administration of lacosamide to pregnant rats (20, 75, or 200 mg/kg/day) and rabbits (6.25, 12.5, or 25 mg/kg/day) during the period of organogenesis did not produce any effects on the incidences of fetal structural abnormalities. However, the maximum doses evaluated were limited by maternal toxicity in both species and embryofetal death in rats. These doses were associated with maternal plasma lacosamide exposures (AUC) approximately 2 and 1 times (rat and rabbit, respectively) that in humans at the maximum recommended human dose (MRHD) of 400 mg/day.

In two studies in which lacosamide (25, 70, or 200 mg/kg/day and 50, 100, or 200 mg/kg/day) was orally administered to rats throughout pregnancy and lactation, increased perinatal mortality and decreased body

weights in the offspring were observed at the highest dose tested. The no-effect dose for pre- and postnatal developmental toxicity in rats (70 mg/kg/day) was associated with a maternal plasma lacosamide AUC similar to that in humans at the MRHD.

Oral administration of lacosamide (30, 90, or 180 mg/kg/day) to rats during the neonatal and juvenile periods of development resulted in decreased brain weights and long-term neurobehavioral changes (altered open field performance, deficits in learning and memory). The early postnatal period in rats is generally thought to correspond to late pregnancy in humans in terms of brain development. The no-effect dose for developmental neurotoxicity in rats was associated with a plasma lacosamide AUC less than that in humans at the MRHD.

In Vitro Data

Lacosamide has been shown *in vitro* to interfere with the activity of collapsin response mediator protein-2 (CRMP-2), a protein involved in neuronal differentiation and control of axonal outgrowth. Potential adverse effects on CNS development related to this activity cannot be ruled out.

8.2 Lactation

Risk Summary

Data from published literature indicate that lacosamide is present in human milk. There are reports of increased sleepiness in breastfed infants exposed to lacosamide (*see Clinical Considerations*). There is no information on the effects of lacosamide on milk production.

The developmental and health benefits of breastfeeding should be considered along with the mother's clinical need for VIMPAT and any potential adverse effects on the breastfed infant from VIMPAT or from the underlying maternal condition.

Clinical Considerations

Monitor infants exposed to VIMPAT through breastmilk for excess sedation.

8.4 Pediatric Use

Partial-Onset Seizures

Safety and effectiveness of VIMPAT for the treatment of partial-onset seizures have been established in pediatric patients 1 month to less than 17 years of age. Use of VIMPAT in this age group is supported by evidence from adequate and well-controlled studies of VIMPAT in adults with partial-onset seizures, pharmacokinetic data from adult and pediatric patients, and safety data in 847 pediatric patients 1 month to less than 17 years of age [*see Adverse Reactions (6.1), Clinical Pharmacology (12.3), and Clinical Studies (14.1, 14.2)*].

Safety and effectiveness in pediatric patients below 1 month of age have not been established.

Primary Generalized Tonic-Clonic Seizures

Safety and effectiveness of VIMPAT as adjunctive therapy in the treatment of primary generalized tonic-clonic seizures in pediatric patients with idiopathic generalized epilepsy 4 years of age and older was established in a 24-week double-blind, randomized, placebo-controlled, parallel-group, multi-center study (Study 5), which included 37 pediatric patients 4 years to less than 17 years of age [*see Adverse Reactions (6.1) and Clinical Studies (14.3)*].

Safety and effectiveness in pediatric patients below the age of 4 years have not been established.

Animal Data

Lacosamide has been shown *in vitro* to interfere with the activity of collapsin response mediator protein-2 (CRMP-2), a protein involved in neuronal differentiation and control of axonal outgrowth. Potential related adverse effects on CNS development cannot be ruled out. Administration of lacosamide to rats during the neonatal and juvenile periods of postnatal development (approximately equivalent to neonatal through adolescent development in humans) resulted in decreased brain weights and long-term neurobehavioral changes (altered open field performance, deficits in learning and memory). The no-effect dose for developmental neurotoxicity in rats was associated with a plasma lacosamide exposure (AUC) less than that in humans at the maximum recommended human dose of 400 mg/day.

8.5 Geriatric Use

There were insufficient numbers of elderly patients enrolled in partial-onset seizure trials (n=18) to adequately determine whether they respond differently from younger patients.

No VIMPAT dose adjustment based on age is necessary. In elderly patients, dose titration should be performed with caution, usually starting at the lower end of the dosing range, reflecting the greater frequency of decreased hepatic function, decreased renal function, increased cardiac conduction abnormalities, and polypharmacy [*see Dosage and Administration (2.1, 2.3, 2.4) and Clinical Pharmacology (12.3)*].

8.6 Renal Impairment

Based on data in adults, no dose adjustment is necessary in adult and pediatric patients with mild to moderate renal impairment ($CL_{CR} \geq 30$ mL/min). In adult and pediatric patients with severe renal impairment ($CL_{CR} < 30$ mL/min) and in those with end-stage renal disease, a reduction of 25% of the maximum dosage is recommended [*see Dosage and Administration (2.3) and Clinical Pharmacology (12.3)*].

In all patients with renal impairment, dose titration should be performed with caution.

VIMPAT is effectively removed from plasma by hemodialysis. Dosage supplementation of up to 50% following hemodialysis should be considered.

8.7 Hepatic Impairment

Based on data in adults, for adult and pediatric patients with mild to moderate hepatic impairment, a reduction of 25% of the maximum dosage is recommended. Patients with mild to moderate hepatic impairment should be observed closely during dose titration [*see Dosage and Administration (2.4), Clinical Pharmacology (12.3)*].

The pharmacokinetics of lacosamide has not been evaluated in severe hepatic impairment. VIMPAT use is not recommended in patients with severe hepatic impairment.

9 DRUG ABUSE AND DEPENDENCE

9.1 Controlled Substance

VIMPAT is a Schedule V controlled substance.

9.2 Abuse

In a human abuse potential study, single doses of 200 mg and 800 mg lacosamide produced euphoria-type subjective responses that differentiated statistically from placebo; at 800 mg, these euphoria-type responses

were statistically indistinguishable from those produced by alprazolam, a Schedule IV drug. The duration of the euphoria-type responses following lacosamide was less than that following alprazolam. A high rate of euphoria was also reported as an adverse event in the human abuse potential study following single doses of 800 mg lacosamide (15% [5/34]) compared to placebo (0%) and in two pharmacokinetic studies following single and multiple doses of 300-800 mg lacosamide (ranging from 6% [2/33] to 25% [3/12]) compared to placebo (0%). However, the rate of euphoria reported as an adverse event in the VIMPAT development program at therapeutic doses was less than 1%.

9.3 Dependence

Abrupt termination of lacosamide in clinical trials with diabetic neuropathic pain patients produced no signs or symptoms that are associated with a withdrawal syndrome indicative of physical dependence. However, psychological dependence cannot be excluded due to the ability of lacosamide to produce euphoria-type adverse events in humans.

10 OVERDOSAGE

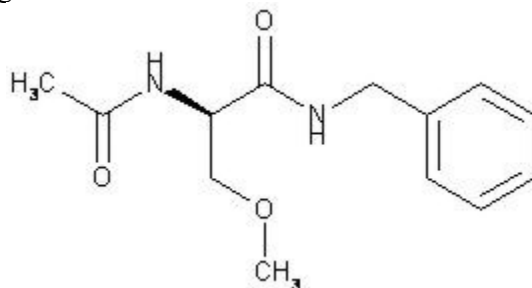
Events reported after an intake of more than 800 mg (twice the maximum recommended daily dosage) of VIMPAT include dizziness, nausea, and seizures (generalized tonic-clonic seizures, status epilepticus). Cardiac conduction disorders, confusion, decreased level of consciousness, cardiogenic shock, cardiac arrest, and coma have also been observed. Fatalities have occurred following lacosamide overdoses of several grams.

There is no specific antidote for overdose with VIMPAT. Standard decontamination procedures should be followed. General supportive care of the patient is indicated including monitoring of vital signs and observation of the clinical status of patient. A Certified Poison Control Center should be contacted for up to date information on the management of overdose with VIMPAT.

Standard hemodialysis procedures result in significant clearance of VIMPAT (reduction of systemic exposure by 50% in 4 hours). Hemodialysis may be indicated based on the patient's clinical state or in patients with significant renal impairment.

11 DESCRIPTION

The chemical name of lacosamide, the single (R)-enantiomer, is (R)-2-acetamido-N-benzyl-3-methoxypropionamide (IUPAC). Lacosamide is a functionalized amino acid. Its molecular formula is $C_{13}H_{18}N_2O_3$ and its molecular weight is 250.30. The chemical structure is:



Lacosamide is a white to light yellow powder. It is sparingly soluble in water and slightly soluble in acetonitrile and ethanol.

11.1 VIMPAT Tablets

VIMPAT tablets for oral administration contain lacosamide and the following inactive ingredients: colloidal silicon dioxide, crospovidone, hydroxypropylcellulose, magnesium stearate, microcrystalline cellulose, polyethylene glycol, polyvinyl alcohol, talc, titanium dioxide, and dye pigments as specified below:

VIMPAT tablets are supplied as debossed tablets and contain the following coloring agents:

50 mg tablets: red iron oxide, black iron oxide, FD&C Blue #2/indigo carmine aluminum lake

100 mg tablets: yellow iron oxide

150 mg tablets: yellow iron oxide, red iron oxide, black iron oxide

200 mg tablets: FD&C Blue #2/indigo carmine aluminum lake

11.2 VIMPAT Injection

VIMPAT injection is a clear, colorless, sterile solution containing 10 mg lacosamide per mL for intravenous infusion. One 20-mL vial contains 200 mg of lacosamide drug substance. The inactive ingredients are sodium chloride and water for injection. Hydrochloric acid is used for pH adjustment. VIMPAT injection has a pH of 3.5 to 5.0.

11.3 VIMPAT Oral Solution

VIMPAT oral solution contains 10 mg of lacosamide per mL. The inactive ingredients are purified water, sorbitol solution, glycerin, polyethylene glycol, carboxymethylcellulose sodium, acesulfame potassium, methylparaben, flavoring (including natural and artificial flavors, propylene glycol, aspartame, and maltol), anhydrous citric acid and sodium chloride.

12 CLINICAL PHARMACOLOGY

12.1 Mechanism of Action

The precise mechanism by which VIMPAT exerts its antiepileptic effects in humans remains to be fully elucidated. *In vitro* electrophysiological studies have shown that lacosamide selectively enhances slow inactivation of voltage-gated sodium channels, resulting in stabilization of hyperexcitable neuronal membranes and inhibition of repetitive neuronal firing.

12.2 Pharmacodynamics

A pharmacokinetic-pharmacodynamic (efficacy) analysis was performed based on the pooled data from the 3 efficacy trials for partial-onset seizures. Lacosamide exposure is correlated with the reduction in seizure frequency. However, doses above 400 mg/day do not appear to confer additional benefit in group analyses.

Cardiac Electrophysiology

Electrocardiographic effects of VIMPAT were determined in a double-blind, randomized clinical pharmacology trial of 247 healthy subjects. Chronic oral doses of 400 and 800 mg/day were compared with placebo and a positive control (400 mg moxifloxacin). VIMPAT did not prolong QTc interval and did not have a dose-related or clinically important effect on QRS duration. VIMPAT produced a small, dose-related increase in mean PR interval. At steady-state, the time of the maximum observed mean PR interval corresponded with t_{max} . The placebo-subtracted maximum increase in PR interval (at t_{max}) was 7.3 ms for the 400 mg/day group and 11.9 ms for the 800 mg/day group. For patients who participated in the controlled trials, the placebo-subtracted mean maximum increase in PR interval for a 400 mg/day VIMPAT dose was 3.1 ms in patients with partial-onset seizures and 9.4 ms for patients with diabetic neuropathy.

12.3 Pharmacokinetics

The pharmacokinetics of VIMPAT have been studied in healthy adult subjects (age range 18 to 87), adults with partial-onset seizures, adults with diabetic neuropathy, and subjects with renal and hepatic impairment. The pharmacokinetics of VIMPAT are similar in healthy subjects, patients with partial-onset seizures, and patients with primary generalized tonic-clonic seizures.

VIMPAT is completely absorbed after oral administration with negligible first-pass effect with a high absolute bioavailability of approximately 100%. The maximum lacosamide plasma concentrations occur approximately 1 to 4 hour post-dose after oral dosing, and elimination half-life is approximately 13 hours. Steady state plasma concentrations are achieved after 3 days of twice daily repeated administration. Pharmacokinetics of VIMPAT are dose proportional (100-800 mg) and time invariant, with low inter- and intra-subject variability. Compared to lacosamide the major metabolite, O-desmethyl metabolite, has a longer T_{max} (0.5 to 12 hours) and elimination half-life (15-23 hours).

Absorption and Bioavailability

VIMPAT is completely absorbed after oral administration. The oral bioavailability of VIMPAT tablets is approximately 100%. Food does not affect the rate and extent of absorption.

After intravenous administration, C_{max} is reached at the end of infusion. The 30- and 60-minute intravenous infusions are bioequivalent to the oral tablet. For the 15-minute intravenous infusion, bioequivalence was met for $AUC_{(0-tz)}$ but not for C_{max} . The point estimate of C_{max} was 20% higher than C_{max} for oral tablet and the 90% CI for C_{max} exceeded the upper boundary of the bioequivalence range.

In a trial comparing the oral tablet with an oral solution containing 10 mg/mL lacosamide, bioequivalence between both formulations was shown.

A single loading dose of 200 mg approximates steady-state concentrations comparable to the 100 mg twice daily oral administration.

Distribution

The volume of distribution is approximately 0.6 L/kg and thus close to the volume of total body water. VIMPAT is less than 15% bound to plasma proteins.

Metabolism and Elimination

VIMPAT is primarily eliminated from the systemic circulation by renal excretion and biotransformation.

After oral and intravenous administration of 100 mg [^{14}C]-lacosamide approximately 95% of radioactivity administered was recovered in the urine and less than 0.5% in the feces. The major compounds excreted were unchanged lacosamide (approximately 40% of the dose), its O-desmethyl metabolite (approximately 30%), and a structurally unknown polar fraction (~20%). The plasma exposure of the major human metabolite, O-desmethyl-lacosamide, is approximately 10% of that of lacosamide. This metabolite has no known pharmacological activity.

The CYP isoforms mainly responsible for the formation of the major metabolite (O-desmethyl) are CYP3A4, CYP2C9, and CYP2C19. The elimination half-life of the unchanged drug is approximately 13 hours and is not altered by different doses, multiple dosing or intravenous administration.

There is no enantiomeric interconversion of lacosamide.

Specific Populations

Renal Impairment

Lacosamide and its major metabolite are eliminated from the systemic circulation primarily by renal excretion.

The AUC of VIMPAT was increased approximately 25% in mildly (CL_{CR} 50-80 mL/min) and moderately (CL_{CR} 30-50 mL/min) and 60% in severely ($CL_{CR} \leq 30$ mL/min) renally impaired patients compared to subjects with normal renal function ($CL_{CR} > 80$ mL/min), whereas C_{max} was unaffected. VIMPAT is effectively removed from plasma by hemodialysis. Following a 4-hour hemodialysis treatment, AUC of VIMPAT is reduced by approximately 50% [see *Dosage and Administration (2.3)*].

Hepatic Impairment

Lacosamide undergoes metabolism. Subjects with moderate hepatic impairment (Child-Pugh B) showed higher plasma concentrations of lacosamide (approximately 50-60% higher AUC compared to healthy subjects). The pharmacokinetics of lacosamide have not been evaluated in severe hepatic impairment [see *Dosage and Administration (2.4)*].

Pediatric Patients (1 month to less than 17 Years of Age)

A multicenter, double-blind, randomized, placebo-controlled, parallel-group study with a 20-day titration period and 7-day maintenance period using VIMPAT oral solution (8mg/kg/day to 12mg/kg/day) was conducted in 255 (128 were randomized to VIMPAT and 127 were randomized to placebo) pediatric patients with epilepsy 1 month to less than 4 years of age with uncontrolled partial-onset seizures. The pediatric pharmacokinetic profile of VIMPAT was determined in a population pharmacokinetic analysis using sparse plasma concentration data obtained in six placebo-controlled studies and five open-label studies in 1655 adult and pediatric patients with epilepsy aged 1 month to less than 17 years who received intravenous, oral solution, or oral tablet formulations.

A weight based dosing regimen is necessary to achieve lacosamide exposures in pediatric patients 1 month to less than 17 years of age similar to those observed in adults treated at effective doses of VIMPAT [see *Dosage and Administration (2.1)*]. For patients weighing 10 kg, 28.9 kg (the mean population body weight), and 70 kg, the typical plasma half-life ($t_{1/2}$) is 7.2 hours, 10.6 hours, and 14.8 hours, respectively. Steady state plasma concentrations are achieved after 3 days of twice daily repeated administration.

The pharmacokinetics of VIMPAT in pediatric patients are similar when used as monotherapy or as adjunctive therapy for the treatment of partial-onset seizures and as adjunctive therapy for the treatment of primary generalized tonic-clonic seizures.

Geriatric Patients

In the elderly (>65 years), dose and body-weight normalized AUC and C_{max} is about 20% increased compared to young subjects (18-64 years). This may be related to body weight and decreased renal function in elderly subjects.

Gender

VIMPAT clinical trials indicate that gender does not have a clinically relevant influence on the pharmacokinetics of VIMPAT.

Race

There are no clinically relevant differences in the pharmacokinetics of VIMPAT between Asian, Black, and Caucasian subjects.

CYP2C19 Polymorphism

There are no clinically relevant differences in the pharmacokinetics of VIMPAT between CYP2C19 poor metabolizers and extensive metabolizers. Results from a trial in poor metabolizers (PM) (N=4) and extensive metabolizers (EM) (N=8) of cytochrome P450 (CYP) 2C19 showed that lacosamide plasma concentrations were similar in PMs and EMs, but plasma concentrations and the amount excreted into urine of the O-desmethyl metabolite were about 70% reduced in PMs compared to EMs.

Drug Interactions

In Vitro Assessment of Drug Interactions

In vitro metabolism studies indicate that lacosamide does not induce the enzyme activity of drug metabolizing cytochrome P450 isoforms CYP1A2, 2B6, 2C9, 2C19 and 3A4. Lacosamide did not inhibit CYP 1A1, 1A2, 2A6, 2B6, 2C8, 2C9, 2D6, 2E1, 3A4/5 at plasma concentrations observed in clinical studies.

In vitro data suggest that lacosamide has the potential to inhibit CYP2C19 at therapeutic concentrations. However, an *in vivo* study with omeprazole did not show an inhibitory effect on omeprazole pharmacokinetics.

Lacosamide was not a substrate or inhibitor for P-glycoprotein.

Lacosamide is a substrate of CYP3A4, CYP2C9, and CYP2C19. Patients with renal or hepatic impairment who are taking strong inhibitors of CYP3A4 and CYP2C9 may have increased exposure to lacosamide.

Since <15% of lacosamide is bound to plasma proteins, a clinically relevant interaction with other drugs through competition for protein binding sites is unlikely.

In Vivo Assessment of Drug Interactions

- Drug interaction studies with AEDs
 - Effect of VIMPAT on concomitant AEDs

VIMPAT 400 mg/day had no influence on the pharmacokinetics of 600 mg/day valproic acid and 400 mg/day carbamazepine in healthy subjects.

The placebo-controlled clinical studies in patients with partial-onset seizures showed that steady-state plasma concentrations of levetiracetam, carbamazepine, carbamazepine epoxide, lamotrigine, topiramate, oxcarbazepine monohydroxy derivative (MHD), phenytoin, valproic acid, phenobarbital, gabapentin, clonazepam, and zonisamide were not affected by concomitant intake of VIMPAT at any dose.
 - Effect of concomitant AEDs on VIMPAT

Drug-drug interaction studies in healthy subjects showed that 600 mg/day valproic acid had no influence on the pharmacokinetics of 400 mg/day VIMPAT. Likewise, 400 mg/day carbamazepine had no influence on the pharmacokinetics of VIMPAT in a healthy subject study. Population pharmacokinetics results in patients with partial-onset seizures showed small reductions (15% to 20% lower) in lacosamide plasma concentrations when VIMPAT was coadministered with carbamazepine, phenobarbital or phenytoin.

- Drug-drug interaction studies with other drugs

- Digoxin

There was no effect of VIMPAT (400 mg/day) on the pharmacokinetics of digoxin (0.5 mg once daily) in a study in healthy subjects.

- Metformin

There were no clinically relevant changes in metformin levels following coadministration of VIMPAT (400 mg/day).

Metformin (500 mg three times a day) had no effect on the pharmacokinetics of VIMPAT (400 mg/day).

- Omeprazole

Omeprazole is a CYP2C19 substrate and inhibitor.

There was no effect of VIMPAT (600 mg/day) on the pharmacokinetics of omeprazole (40 mg single dose) in healthy subjects. The data indicated that lacosamide had little *in vivo* inhibitory or inducing effect on CYP2C19.

Omeprazole at a dose of 40 mg once daily had no effect on the pharmacokinetics of VIMPAT (300 mg single dose). However, plasma levels of the O-desmethyl metabolite were reduced about 60% in the presence of omeprazole.

- Midazolam

Midazolam is a 3A4 substrate.

There was no effect of VIMPAT (200 mg single dose or repeat doses of 400 mg/day given as 200 mg BID) on the pharmacokinetics of midazolam (single dose, 7.5 mg), indicating no inhibitory or inducing effects on CYP3A4.

- Oral Contraceptives

There was no influence of VIMPAT (400 mg/day) on the pharmacodynamics and pharmacokinetics of an oral contraceptive containing 0.03 mg ethinylestradiol and 0.15 mg levonorgestrel in healthy subjects, except that a 20% increase in ethinylestradiol C_{max} was observed.

- Warfarin

Co-administration of VIMPAT (400 mg/day) with warfarin (25 mg single dose) did not result in a clinically relevant change in the pharmacokinetic and pharmacodynamic effects of warfarin in a study in healthy male subjects.

13 NONCLINICAL TOXICOLOGY

13.1 Carcinogenesis, Mutagenesis, Impairment of Fertility

Carcinogenesis

There was no evidence of drug related carcinogenicity in mice or rats. Mice and rats received lacosamide once daily by oral administration for 104 weeks at doses producing plasma exposures (AUC) up to approximately 1 and 3 times, respectively, the plasma AUC in humans at the maximum recommended human dose (MRHD) of 400 mg/day.

Mutagenesis

Lacosamide was negative in an *in vitro* Ames test and an *in vivo* mouse micronucleus assay. Lacosamide induced a positive response in the *in vitro* mouse lymphoma assay.

Fertility

No adverse effects on male or female fertility or reproduction were observed in rats at doses producing plasma exposures (AUC) up to approximately 2 times the plasma AUC in humans at the MRHD.

14 CLINICAL STUDIES

14.1 Monotherapy in Patients with Partial-Onset Seizures

The efficacy of VIMPAT in monotherapy was established in a historical-control, multicenter, randomized trial that included 425 patients, age 16 to 70 years, with partial-onset seizures (Study 1). To be included in Study 1, patients were required to be taking stable doses of 1 or 2 marketed antiepileptic drugs. This treatment continued into the 8 week baseline period. To remain in the study, patients were required to have at least 2 partial-onset seizures per 28 days during the 8 week baseline period. The baseline period was followed by a 3 week titration period, during which VIMPAT was added to the ongoing antiepileptic regimen. This was followed by a 16-week maintenance period (i.e., a 6-week withdrawal period for background antiepileptic drugs, followed by a 10-week monotherapy period). Patients were randomized 3 to 1 to receive VIMPAT 400 mg/day or VIMPAT 300 mg/day. Treatment assignments were blinded. Response to treatment was based upon a comparison of the number of patients who met exit criteria during the maintenance phase, compared to historical controls. The historical control consisted of a pooled analysis of the control groups from 8 studies of similar design, which utilized a sub-therapeutic dose of an antiepileptic drug. Statistical superiority to the historical control was considered to be demonstrated if the upper limit from a 2-sided 95% confidence interval for the percentage of patients meeting exit criteria in patients receiving VIMPAT remained below the lower 95% prediction limit of 65% derived from the historical control data.

The exit criteria were one or more of the following: (1) doubling of average monthly seizure frequency during any 28 consecutive days, (2) doubling of highest consecutive 2-day seizure frequency, (3) occurrence of a single generalized tonic-clonic seizure, (4) clinically significant prolongation or worsening of overall seizure duration, frequency, type or pattern considered by the investigator to require trial discontinuation, (5) status epilepticus or new onset of serial/cluster seizures. The study population profile appeared comparable to that of the historical control population.

For the VIMPAT 400 mg/day group, the estimate of the percentage of patients meeting at least 1 exit criterion was 30% (95% CI: 25%, 36%). The upper limit of the 2-sided 95% CI (36%) was below the threshold of 65% derived from the historical control data, meeting the pre-specified criteria for efficacy. VIMPAT 300 mg/day also met the pre-specified criteria for efficacy.

14.2 Adjunctive Therapy in Patients with Partial-Onset Seizures

The efficacy of VIMPAT as adjunctive therapy in partial-onset seizures was established in three 12-week, randomized, double-blind, placebo-controlled, multicenter trials in adult patients (Study 2, Study 3, and Study 4). Enrolled patients had partial-onset seizures with or without secondary generalization, and were not adequately controlled with 1 to 3 concomitant AEDs. During an 8-week baseline period, patients were required to have an average of ≥ 4 partial-onset seizures per 28 days with no seizure-free period exceeding 21 days. In these 3 trials, patients had a mean duration of epilepsy of 24 years and a median baseline seizure frequency

ranging from 10 to 17 per 28 days. 84% of patients were taking 2 to 3 concomitant AEDs with or without concurrent vagal nerve stimulation.

Study 2 compared doses of VIMPAT 200, 400, and 600 mg/day with placebo. Study 3 compared doses of VIMPAT 400 and 600 mg/day with placebo. Study 4 compared doses of VIMPAT 200 and 400 mg/day with placebo. In all three trials, following an 8-week baseline phase to establish baseline seizure frequency prior to randomization, patients were randomized and titrated to the randomized dose (a 1-step back-titration of VIMPAT 100 mg/day or placebo was allowed in the case of intolerable adverse events at the end of the titration phase). During the titration phase, in all 3 adjunctive therapy trials, treatment was initiated at 100 mg/day (50 mg twice daily), and increased in weekly increments of 100 mg/day to the target dose. The titration phase lasted 6 weeks in Study 2 and Study 3, and 4 weeks in Study 4. In all three trials, the titration phase was followed by a maintenance phase that lasted 12 weeks, during which patients were to remain on a stable dose of VIMPAT.

A reduction in 28 day seizure frequency (baseline to maintenance phase), as compared to the placebo group, was the primary variable in all three adjunctive therapy trials. A statistically significant effect was observed with VIMPAT treatment (Figure 1) at doses of 200 mg/day (Study 4), 400 mg/day (Studies 2, 3, and 4), and 600 mg/day (Studies 2 and 3).

Subset evaluations of VIMPAT demonstrate no important differences in seizure control as a function of gender or race, although data on race was limited (about 10% of patients were non-Caucasian).

Figure 1 – Median Percent Reduction in Seizure Frequency per 28 days from Baseline to the Maintenance Phase by Dose

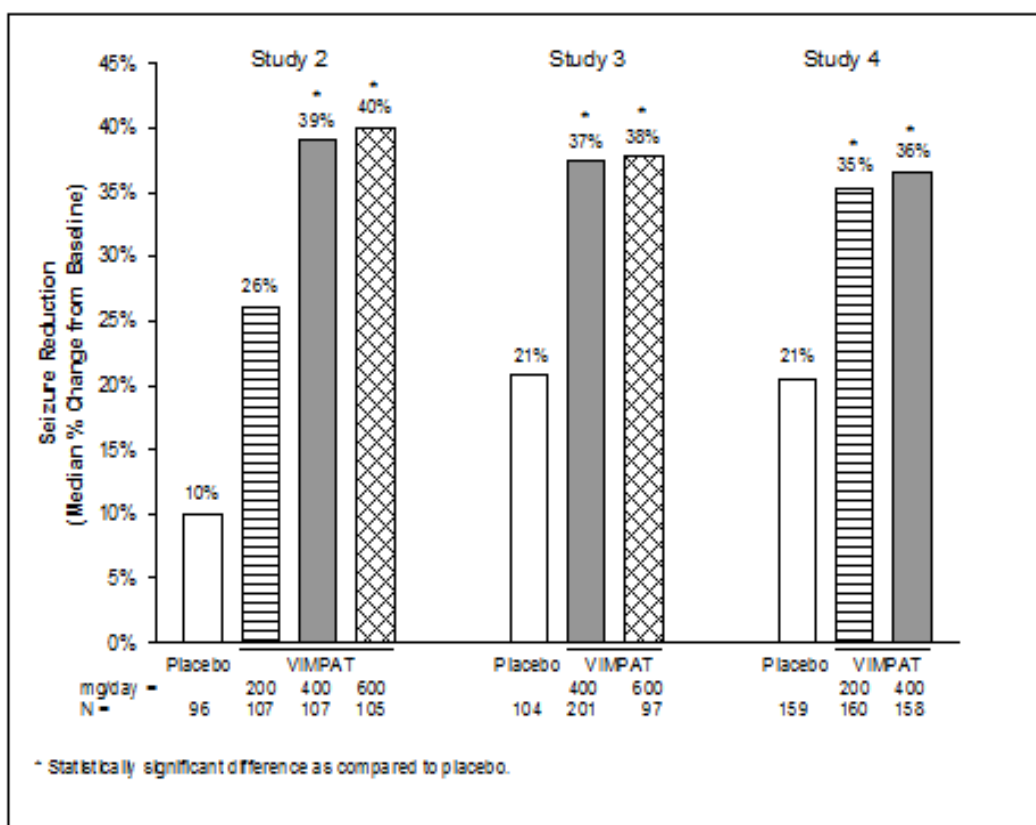
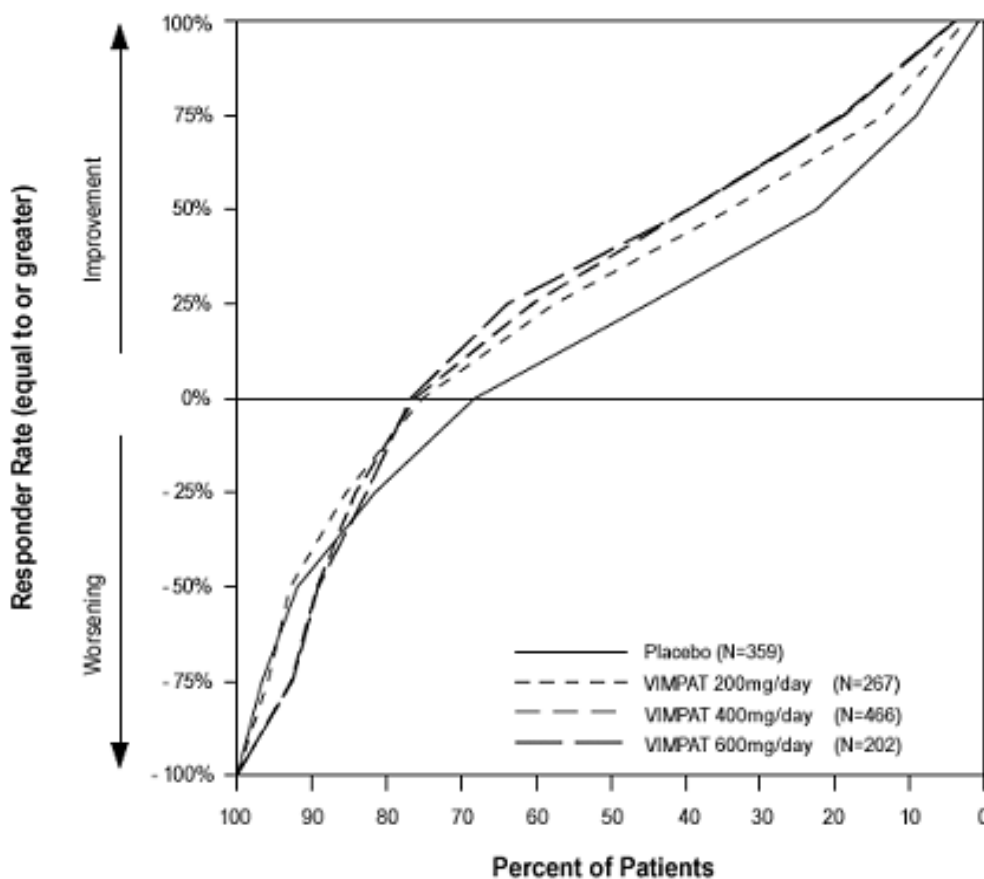


Figure 2 presents the percentage of patients (X-axis) with a percent reduction in partial seizure frequency (responder rate) from baseline to the maintenance phase at least as great as that represented on the Y-axis. A positive value on the Y-axis indicates an improvement from baseline (i.e., a decrease in seizure frequency),

while a negative value indicates a worsening from baseline (i.e., an increase in seizure frequency). Thus, in a display of this type, a curve for an effective treatment is shifted to the left of the curve for placebo. The proportion of patients achieving any particular level of reduction in seizure frequency was consistently higher for the VIMPAT groups, compared to the placebo group. For example, 40% of patients randomized to VIMPAT (400 mg/day) experienced a 50% or greater reduction in seizure frequency, compared to 23% of patients randomized to placebo. Patients with an increase in seizure frequency >100% are represented on the Y-axis as equal to or greater than -100%.

Figure 2 – Proportion of Patients by Responder Rate for VIMPAT and Placebo Groups in Studies 2, 3, and 4



14.3 Adjunctive Therapy in Patients with Primary Generalized Tonic-Clonic Seizures

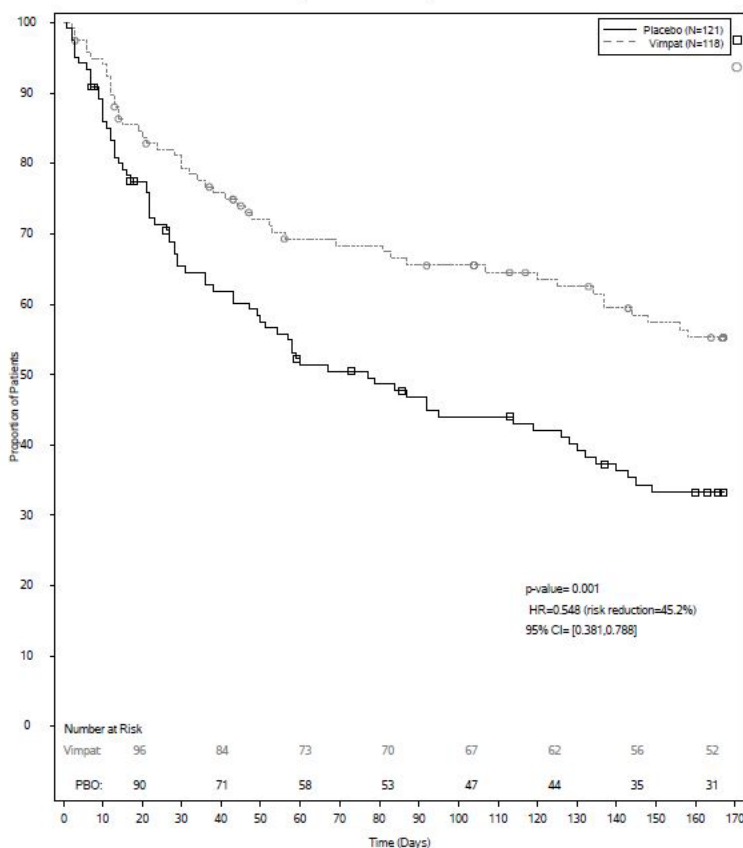
The efficacy of VIMPAT as adjunctive therapy in patients 4 years of age and older with idiopathic generalized epilepsy experiencing primary generalized tonic-clonic (PGTC) seizures was established in a 24-week double-blind, randomized, placebo-controlled, parallel-group, multi-center study (Study 5). The study consisted of a 12-week historical baseline period, a 4-week prospective baseline period, and a 24-week treatment period (which included a 6-week titration period and an 18-week maintenance period). Eligible patients on a stable dose of 1 to 3 antiepileptic drugs experiencing at least 3 documented PGTC seizures during the 16-week combined baseline period were randomized 1:1 to receive VIMPAT (n=121) or placebo (n=121).

Patients were dosed on a fixed-dose regimen. Dosing was initiated at a dose of 2 mg/kg/day in patients weighing less than 50 kg or 100 mg/day in patients weighing 50 kg or more in 2 divided doses. During the titration period, VIMPAT doses were adjusted in 2 mg/kg/day increments in patients weighing less than 50 kg or 100 mg/day in patients weighing 50 kg or more at weekly intervals to achieve the target maintenance period dose of 12 mg/kg/day in patients weighing less than 30 kg, 8 mg/kg/day in patients weighing from 30 to less than 50 kg, or 400 mg/day in patients weighing 50 kg or more.

The primary efficacy endpoint (patients in the modified full analysis set: VIMPAT n=118, placebo n=121) was the time to second PGTC seizure during the 24-week treatment period (Figure 3). The risk of developing a second PGTC seizure was statistically significantly lower in VIMPAT group than in the placebo group during the 24-week treatment period (hazard ratio=0.548, 95% CI of hazard ratio: 0.381, 0.788, p-value = 0.001), with the corresponding risk reduction being 45.2%.

The key secondary efficacy endpoint was the percentage of patients not experiencing a PGTC seizure during the 24-week treatment period. The adjusted Kaplan-Meier estimates of 24-week freedom from PGTC seizures were 31.3% in VIMPAT group and 17.2% in placebo group. The adjusted difference between treatment groups was 14.1% (95% CI: 3.2, 25.1, p-value=0.011).

**Figure 3 – Kaplan-Meier Analysis of Time to 2nd PGTC Seizure (Study 5)
Analysis Set: Modified Full Analysis Set**



The numbers at the bottom of the figure are for patients still at risk in the study at a given timepoint (i.e., the continuing patients in the study without an event or censoring prior to the timepoint).

16 HOW SUPPLIED/STORAGE AND HANDLING

16.1 How Supplied

VIMPAT (lacosamide) Tablets

- 50 mg are pink, oval, film-coated tablets debossed with "SP" on one side and "50" on the other. They are supplied as follows:

Bottles of 60 NDC 0131-2477-35

Unit Dose Carton of 60 tablets [6 cards, each card contains 10 tablets] NDC 0131-2477-60

- 100 mg are dark yellow, oval, film-coated tablets debossed with "SP" on one side and "100" on the other. They are supplied as follows:

Bottles of 60 NDC 0131-2478-35

Unit Dose Carton of 60 tablets [6 cards, each card contains 10 tablets] NDC 0131-2478-60

- 150 mg are salmon, oval, film-coated tablets debossed with "SP" on one side and "150" on the other. They are supplied as follows:

Bottles of 60 NDC 0131-2479-35

Unit Dose Carton of 60 tablets [6 cards, each card contains 10 tablets] NDC 0131-2479-60

- 200 mg are blue, oval, film-coated tablets debossed with "SP" on one side and "200" on the other. They are supplied as follows:

Bottles of 60 NDC 0131-2480-35

Unit Dose Carton of 60 tablets [6 cards, each card contains 10 tablets] NDC 0131-2480-60

VIMPAT (lacosamide) Injection

- 200 mg/20 mL is a clear, colorless sterile solution supplied in 20 mL colorless single-dose glass vials.

200 mg/20 mL vial in cartons of 10 vials NDC 0131-1810-67

VIMPAT (lacosamide) Oral Solution

- 10 mg/mL is a clear, colorless to yellow or yellow-brown, strawberry-flavored liquid. It is supplied as follows:

200 mL in glass bottles NDC 0131-5410-72

16.2 Storage and Handling

Store at 20°C to 25°C (68°F to 77°F); excursions permitted between 15°C to 30°C (59°F to 86°F).

[See USP Controlled Room Temperature]

Do not freeze VIMPAT injection or oral solution. Discard any unused VIMPAT oral solution remaining after six (6) months of first opening the bottle.

17 PATIENT COUNSELING INFORMATION

Advise the patient or caregiver to read the FDA-approved patient labeling (Medication Guide). The Medication Guide accompanies the product and can also be accessed on www.vimpat.com or by calling 1-844-599-2273.

Suicidal Thinking and Behavior

Patients, their caregivers, and families should be counseled that AEDs, including VIMPAT, may increase the risk of suicidal thoughts and behavior and should be advised of the need to be alert for the emergence or worsening of symptoms of depression, any unusual changes in mood or behavior, or the emergence of suicidal thoughts, behavior, or thoughts about self-harm. Behaviors of concern should be reported immediately to healthcare providers [*see Warnings and Precautions (5.1)*].

Dizziness and Ataxia

Patients should be counseled that VIMPAT use may cause dizziness, double vision, abnormal coordination and balance, and somnolence. Patients taking VIMPAT should be advised not to drive, operate complex machinery, or engage in other hazardous activities until they have become accustomed to any such effects associated with VIMPAT [*see Warnings and Precautions (5.2)*].

Cardiac Rhythm and Conduction Abnormalities

Patients should be counseled that VIMPAT is associated with electrocardiographic changes that may predispose to irregular heart beat and syncope. Cardiac arrest has been reported. This risk is increased in patients with underlying cardiovascular disease, with heart conduction problems, or who are taking other medications that affect the heart. Patients should be made aware of and report cardiac signs or symptoms to their healthcare provider right away. Patients who develop syncope should lay down with raised legs and contact their health care provider [*see Warnings and Precautions (5.3)*].

Drug Reaction with Eosinophilia and Systemic Symptoms (DRESS)/Multi-Organ Hypersensitivity

Patients should be aware that VIMPAT may cause serious hypersensitivity reactions affecting multiple organs such as the liver and kidney. VIMPAT should be discontinued if a serious hypersensitivity reaction is suspected. Patients should also be instructed to report promptly to their physicians any symptoms of liver toxicity (e.g., fatigue, jaundice, dark urine) [*see Warnings and Precautions (5.6)*].

Pregnancy Registry

Advise patients to notify their healthcare provider if they become pregnant or intend to become pregnant during VIMPAT therapy. Encourage patients to enroll in the North American Antiepileptic Drug (NAAED) pregnancy registry if they become pregnant. This registry is collecting information about the safety of AEDs during pregnancy [*see Use in Specific Populations (8.1)*].

Lactation

Advise breastfeeding women using VIMPAT to monitor infants for excess sleepiness and to seek medical care if they notice this sign [*see Use in Specific Populations (8.2)*].

Manufactured for: UCB, Inc. Smyrna, GA 30080



VIMPAT® is a registered trademark under license from Harris FRC Corporation and covered by one or more

claims of U.S. Patent 38,551.
©2022, UCB, Inc., Smyrna, GA 30080
All rights reserved.

MEDICATION GUIDE

**VIMPAT (VIM-pät)
(lacosamide)**

film coated tablet, for oral use, CV

**VIMPAT (VIM-pät)
(lacosamide)**

injection, for intravenous use, CV

**VIMPAT (VIM-pät)
(lacosamide)**

oral solution, CV

Read this Medication Guide before you start taking VIMPAT and each time you get a refill. There may be new information. This Medication Guide describes important safety information about VIMPAT. This information does not take the place of talking to your healthcare provider about your medical condition or treatment.

What is the most important information I should know about VIMPAT?

Do not stop taking VIMPAT without first talking to your healthcare provider. Stopping VIMPAT suddenly can cause serious problems. Stopping seizure medicine suddenly in a patient who has epilepsy can cause seizures that will not stop (status epilepticus).

VIMPAT can cause serious side effects, including:

1. **Like other antiepileptic drugs, VIMPAT may cause suicidal thoughts or actions in a very small number of people, about 1 in 500.**

Call a healthcare provider right away if you have any of these symptoms, especially if they are new, worse, or worry you:

- thoughts about suicide or dying
- attempt to commit suicide
- new or worse depression
- new or worse anxiety
- feeling agitated or restless
- panic attacks
- trouble sleeping (insomnia)
- new or worse irritability
- acting aggressive, being angry, or violent
- acting on dangerous impulses
- an extreme increase in activity and talking (mania)
- other unusual changes in behavior or mood

How can I watch for early symptoms of suicidal thoughts and actions?

- Pay attention to any changes, especially sudden changes, in mood, behaviors, thoughts, or feelings.
 - Keep all follow-up visits with your healthcare provider as scheduled.
 - Call your healthcare provider between visits as needed, especially if you are worried about symptoms.
 - Suicidal thoughts or actions can be caused by things other than medicines. If you have suicidal thoughts or actions, your healthcare provider may check for other causes.
2. VIMPAT may cause you to feel dizzy, have double vision, feel sleepy, or have problems with coordination and walking. Do not drive, operate heavy machinery, or do other dangerous activities until you know how VIMPAT affects you.
3. VIMPAT may cause you to have an irregular heartbeat or may cause you to faint. In rare cases, cardiac arrest has been reported. Call your healthcare provider right away if you:
- have a fast, slow, or pounding heartbeat or feel your heart skip a beat
 - have shortness of breath
 - have chest pain
 - feel lightheaded
 - fainted or if you feel like you are going to faint
- If you have fainted or feel like you are going to faint you should lay down with your legs raised.
4. VIMPAT is a federally controlled substance (CV) because it can be abused or lead to drug dependence. Keep your VIMPAT in a safe place, to protect it from theft. Never give your VIMPAT to anyone else, because it may harm them. Selling or giving away this medicine is against the law.

What is VIMPAT?

VIMPAT is a prescription medicine used:

- to treat partial-onset seizures in people 1 month of age and older.
- with other medicines to treat primary generalized tonic-clonic seizures in people 4 years of age and older.

It is not known if VIMPAT is safe and effective for partial-onset seizures in children under 1 month of age or for primary generalized tonic-clonic seizures in children under 4 years of age.

What should I tell my healthcare provider before taking VIMPAT?

Before you take VIMPAT, tell your healthcare provider about all of your medical conditions, including if you:

- have or have had depression, mood problems or suicidal thoughts or behavior.
- have heart problems.

- have kidney problems.
- have liver problems.
- have abused prescription medicines, street drugs or alcohol in the past.
- are pregnant or plan to become pregnant. It is not known if VIMPAT can harm your unborn baby. Tell your healthcare provider right away if you become pregnant while taking VIMPAT. You and your healthcare provider will decide if you should take VIMPAT while you are pregnant.
 - If you become pregnant while taking VIMPAT, talk to your healthcare provider about registering with the North American Antiepileptic Drug Pregnancy Registry. You can enroll in this registry by calling 1-888-233-2334. The purpose of this registry is to collect information about the safety of antiepileptic medicine during pregnancy.
- are breastfeeding or plan to breastfeed. VIMPAT passes into breast milk.
 - Breastfeeding during treatment with VIMPAT may cause your baby to have more sleepiness than normal. If this happens, contact your baby's healthcare provider.
 - Talk to your healthcare provider about the best way to feed your baby if you take VIMPAT.

Tell your healthcare provider about all the medicines you take, including prescription and over-the-counter medicines, vitamins, and herbal supplements.

Taking VIMPAT with certain other medicines may cause side effects or affect how well they work. Do not start or stop other medicines without talking to your healthcare provider. Know the medicines you take. Keep a list of them and show it to your healthcare provider and pharmacist each time you get a new medicine.

How should I take VIMPAT?

- Take VIMPAT exactly as your healthcare provider tells you.
- Your healthcare provider will tell you how much VIMPAT to take and when to take it.
- Your healthcare provider may change your dose if needed.
- Do not stop VIMPAT without first talking to a healthcare provider. Stopping VIMPAT suddenly in a patient who has epilepsy can cause seizures that will not stop (status epilepticus).
- VIMPAT may be taken with or without food.
- Swallow VIMPAT tablets whole with liquid. Do not cut VIMPAT tablets.
- If your healthcare provider has prescribed VIMPAT oral solution, be sure to ask your pharmacist for a medicine dropper or medicine cup to help you measure the correct amount of VIMPAT oral solution. Do not use a household teaspoon. Ask your pharmacist for instructions on how to use the measuring device the right way.
- If you take too much VIMPAT, call your healthcare provider or local Poison Control Center right away.

What should I avoid while taking VIMPAT?

Do not drive, operate heavy machinery, or do other dangerous activities until you know how VIMPAT affects you. VIMPAT may cause you to feel dizzy, have double vision, feel sleepy, or have problems with coordination and walking.

What are the possible side effects of VIMPAT?

- See "**What is the most important information I should know about VIMPAT?**"

VIMPAT may cause other serious side effects including:

- **A serious allergic reaction that may affect your skin or other parts of your body such as your liver or blood cells.** Call your healthcare provider right away if you have:

○ a skin rash, hives	○ swelling of the legs
○ fever or swollen glands that do not go away	○ yellowing of the skin or whites of the eyes
○ shortness of breath	○ dark urine
○ tiredness (fatigue)	

The most common side effects of VIMPAT include:

- | | |
|-----------------|--------------|
| • double vision | • nausea |
| • headache | • sleepiness |
| • dizziness | |

These are not all of the possible side effects of VIMPAT. For more information ask your healthcare provider or pharmacist. Tell your healthcare provider about any side effect that bothers you or that does not go away. Call your doctor for medical advice about side effects. You may report side effects to FDA at 1-800-FDA-1088.

How should I store VIMPAT?

- Store VIMPAT at room temperature between 68°F to 77°F (20°C to 25°C).
- Do not freeze VIMPAT injection or oral solution.
- Throw away any unused VIMPAT oral solution 6 months after you first open the bottle.

Keep VIMPAT and all medicines out of the reach of children.

General Information about the safe and effective use of VIMPAT.

Medicines are sometimes prescribed for purposes other than those listed in a Medication Guide. Do not use VIMPAT for a condition for which it was not prescribed. Do not give VIMPAT to other people, even if they have the same symptoms that you have. It may harm them.

This Medication Guide summarizes the most important information about VIMPAT. If you would like more information, talk with your healthcare provider. You can ask your pharmacist or healthcare provider for information about VIMPAT that is written for health professionals.

What are the ingredients in VIMPAT?

Active ingredient: lacosamide

Tablet inactive ingredients: colloidal silicon dioxide, crospovidone, hydroxypropylcellulose, magnesium stearate, microcrystalline cellulose, polyethylene glycol, polyvinyl alcohol, talc, titanium dioxide and additional ingredients listed below:

- **50 mg tablets:** red iron oxide, black iron oxide, FD&C Blue #2/indigo carmine aluminum lake
- **100 mg tablets:** yellow iron oxide
- **150 mg tablets:** yellow iron oxide, red iron oxide, black iron oxide
- **200 mg tablets:** FD&C Blue #2/indigo carmine aluminum lake

Injection inactive ingredients: sodium chloride, water for injection, hydrochloric acid

Oral solution inactive ingredients: purified water, sorbitol solution, glycerin, polyethylene glycol, carboxymethylcellulose sodium, acesulfame potassium, methylparaben, flavoring (including natural and artificial flavors, propylene glycol, aspartame, and maltol), anhydrous citric acid and sodium chloride.

Manufactured for: UCB, Inc. Smyrna, GA 30080

VIMPAT® is a registered trademark under license from Harris FRC Corporation and covered by one or more claims of U.S. Patent 38,551.

For more information, go to www.vimpat.com or call 1-844-599-2273.

This Medication Guide has been approved by the U.S. Food and Drug Administration

Revised: 9/2022